



Data Report

File Created Date: 25-Feb-22 15:35:42

Note: All times shown are based on UTC +00:00 and 24-Hour clock [DD-MMM-YY HH:MM:SS]

Device Information

Serial Number: M2H211100009	Log Interval: 00H 10M 00S	Temperature Type: °C
Model Number: M2H-000	Start Mode: Manual	Sensor Type: temperature_humidity(IN)
Version: V1.1	Start Delay: 00D 00H 30M 00S	

Trip Information

Internal ID: 0000001	Description: Temperature Recording
----------------------	------------------------------------

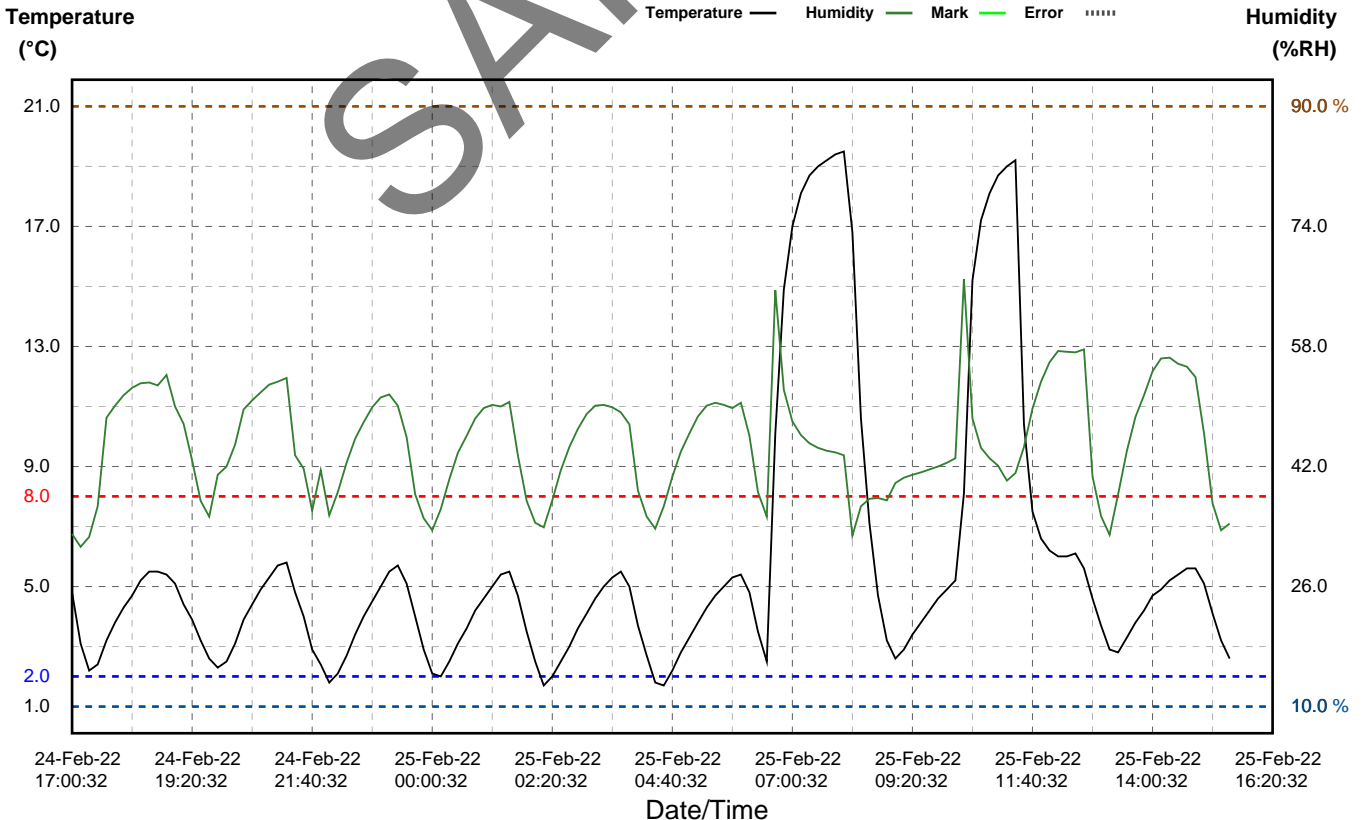
Logging Summary

Start Time: 24-Feb-22 17:00:32	Record Mode: Stop when full	MKT: 7.5 °C
Stop Time: 25-Feb-22 15:30:32	Stop Mode: Temporary	Average: 5.7 °C / 45.1 %
Elapsed Time: 00D 22H 30M 00S	Data Points: 136	
First Alarm(T): 24-Feb-22 22:00:32	Highest(T): 19.5 °C @ 25-Feb-22 08:00:32	Lowest(T): 1.7 °C @ 25-Feb-22 02:10:32
First Alarm(RH): N/A	Highest(H): 67.0 % @ 25-Feb-22 10:20:32	Lowest(H): 31.3 % @ 24-Feb-22 17:10:32

Marked Events

N/A

Alarm Zone	Alarm Delay	Total Time	Max Time	Violations	Status
T1: over 8.0 °C	00D 00H 00M 00S (Sin)	00D 03H 10M 00S	00D 01H 50M 00S @ 25-Feb-22 06:40:32	2	Alarm
T2: below 2.0 °C	00D 00H 00M 00S (Sin)	00D 00H 40M 00S	00D 00H 20M 00S @ 25-Feb-22 04:20:32	3	Alarm
T3: Not Set					
T4: Not Set					
T5: Not Set					
T6: Not Set					
SZ: 2.0 to 8.0 °C	unlimited	00D 18H 40M 00S			
H1: over 90.0 %	00D 00H 00M 00S (Sin)	00D 00H 00M 00S	N/A	0	OK
H2: below 10.0 %	00D 00H 00M 00S (Sin)	00D 00H 00M 00S	N/A	0	OK
H3: Not Set					
H4: Not Set					
H5: Not Set					
H6: Not Set					
SZ: 10.0 to 90.0 %	unlimited	00D 22H 30M 00S			



DATE TIME	°C	%RH	DATE TIME	°C	%RH	DATE TIME	°C	%RH	DATE TIME	°C	%RH	DATE TIME	°C	%RH
24-Feb-22 17:00:32	4.8	33.0	25-Feb-22 09:40:32	4.2	41.6									
24-Feb-22 17:10:32	3.1	31.3	25-Feb-22 09:50:32	4.6	42.0									
24-Feb-22 17:20:32	2.2	32.6	25-Feb-22 10:00:32	4.9	42.5									
24-Feb-22 17:30:32	2.4	36.7	25-Feb-22 10:10:32	5.2	43.1									
24-Feb-22 17:40:32	3.2	48.5	25-Feb-22 10:20:32	8.1	67.0									
24-Feb-22 17:50:32	3.8	50.1	25-Feb-22 10:30:32	15.2	48.4									
24-Feb-22 18:00:32	4.3	51.5	25-Feb-22 10:40:32	17.2	44.5									
24-Feb-22 18:10:32	4.7	52.5	25-Feb-22 10:50:32	18.1	43.1									
24-Feb-22 18:20:32	5.2	53.1	25-Feb-22 11:00:32	18.7	42.1									
24-Feb-22 18:30:32	5.5	53.2	25-Feb-22 11:10:32	19.0	40.1									
24-Feb-22 18:40:32	5.5	52.8	25-Feb-22 11:20:32	19.2	41.1									
24-Feb-22 18:50:32	5.4	54.2	25-Feb-22 11:30:32	10.4	44.6									
24-Feb-22 19:00:32	5.1	50.0	25-Feb-22 11:40:32	7.5	49.7									
24-Feb-22 19:10:32	4.4	47.7	25-Feb-22 11:50:32	6.6	53.3									
24-Feb-22 19:20:32	3.9	42.8	25-Feb-22 12:00:32	6.2	55.9									
24-Feb-22 19:30:32	3.2	37.4	25-Feb-22 12:10:32	6.0	57.4									
24-Feb-22 19:40:32	2.6	35.3	25-Feb-22 12:20:32	6.0	57.3									
24-Feb-22 19:50:32	2.3	40.9	25-Feb-22 12:30:32	6.1	57.2									
24-Feb-22 20:00:32	2.5	42.0	25-Feb-22 12:40:32	5.6	57.6									
24-Feb-22 20:10:32	3.1	44.9	25-Feb-22 12:50:32	4.6	40.7									
24-Feb-22 20:20:32	3.9	49.6	25-Feb-22 13:00:32	3.7	35.4									
24-Feb-22 20:30:32	4.4	50.8	25-Feb-22 13:10:32	2.9	32.9									
24-Feb-22 20:40:32	4.9	51.9	25-Feb-22 13:20:32	2.8	38.3									
24-Feb-22 20:50:32	5.3	52.9	25-Feb-22 13:30:32	3.3	44.1									
24-Feb-22 21:00:32	5.7	53.3	25-Feb-22 13:40:32	3.8	48.6									
24-Feb-22 21:10:32	5.8	53.8	25-Feb-22 13:50:32	4.2	51.5									
24-Feb-22 21:20:32	4.8	43.5	25-Feb-22 14:00:32	4.7	54.7									
24-Feb-22 21:30:32	4.0	41.7	25-Feb-22 14:10:32	4.9	56.4									
24-Feb-22 21:40:32	2.9	36.1	25-Feb-22 14:20:32	5.2	56.5									
24-Feb-22 21:50:32	2.4	41.5	25-Feb-22 14:30:32	5.4	55.7									
24-Feb-22 22:00:32	1.8	35.5	25-Feb-22 14:40:32	5.6	55.3									
24-Feb-22 22:10:32	2.1	38.6	25-Feb-22 14:50:32	5.6	53.9									
24-Feb-22 22:20:32	2.7	42.5	25-Feb-22 15:00:32	5.1	46.4									
24-Feb-22 22:30:32	3.4	45.7	25-Feb-22 15:10:32	4.1	37.1									
24-Feb-22 22:40:32	4.0	47.9	25-Feb-22 15:20:32	3.2	33.5									
24-Feb-22 22:50:32	4.5	49.9	25-Feb-22 15:30:32	2.6	34.4									
24-Feb-22 23:00:32	5.0	51.2												
24-Feb-22 23:10:32	5.5	51.6												
24-Feb-22 23:20:32	5.7	50.1												
24-Feb-22 23:30:32	5.1	45.9												
24-Feb-22 23:40:32	4.0	38.3												
24-Feb-22 23:50:32	2.9	35.1												
25-Feb-22 00:00:32	2.1	33.5												
25-Feb-22 00:10:32	2.0	36.3												
25-Feb-22 00:20:32	2.5	40.3												
25-Feb-22 00:30:32	3.1	43.8												
25-Feb-22 00:40:32	3.6	46.1												
25-Feb-22 00:50:32	4.2	48.4												
25-Feb-22 01:00:32	4.6	49.8												
25-Feb-22 01:10:32	5.0	50.2												
25-Feb-22 01:20:32	5.4	50.0												
25-Feb-22 01:30:32	5.5	50.6												
25-Feb-22 01:40:32	4.7	43.5												
25-Feb-22 01:50:32	3.5	37.4												
25-Feb-22 02:00:32	2.5	34.5												
25-Feb-22 02:10:32	1.7	33.9												
25-Feb-22 02:20:32	2.0	37.5												
25-Feb-22 02:30:32	2.5	41.5												
25-Feb-22 02:40:32	3.0	44.6												
25-Feb-22 02:50:32	3.6	47.0												
25-Feb-22 03:00:32	4.1	49.0												
25-Feb-22 03:10:32	4.6	50.1												
25-Feb-22 03:20:32	5.0	50.2												
25-Feb-22 03:30:32	5.3	49.9												
25-Feb-22 03:40:32	5.5	49.2												
25-Feb-22 03:50:32	5.0	47.6												
25-Feb-22 04:00:32	3.7	38.8												
25-Feb-22 04:10:32	2.7	35.3												
25-Feb-22 04:20:32	1.8	33.7												
25-Feb-22 04:30:32	1.7	36.7												
25-Feb-22 04:40:32	2.2	40.6												
25-Feb-22 04:50:32	2.8	44.0												
25-Feb-22 05:00:32	3.3	46.4												
25-Feb-22 05:10:32	3.8	48.7												
25-Feb-22 05:20:32	4.3	50.1												
25-Feb-22 05:30:32	4.7	50.5												
25-Feb-22 05:40:32	5.0	50.2												
25-Feb-22 05:50:32	5.3	49.8												
25-Feb-22 06:00:32	5.4	50.5												
25-Feb-22 06:10:32	4.8	46.1												
25-Feb-22 06:20:32	3.5	38.6												
25-Feb-22 06:30:32	2.5	35.3												
25-Feb-22 06:40:32	10.1	65.5												
25-Feb-22 06:50:32	14.9	52.2												
25-Feb-22 07:00:32	17.0	48.0												
25-Feb-22 07:10:32	18.1	46.2												
25-Feb-22 07:20:32	18.7	45.1												
25-Feb-22 07:30:32	19.0	44.5												
25-Feb-22 07:40:32	19.2	44.1												
25-Feb-22 07:50:32	19.4	43.9												
25-Feb-22 08:00:32	19.5	43.5												
25-Feb-22 08:10:32	16.8	32.8												
25-Feb-22 08:20:32	10.6	36.7												
25-Feb-22 08:30:32	7.1	37.7												
25-Feb-22 08:40:32	4.7	37.8												
25-Feb-22 08:50:32	3.2	37.5												
25-Feb-22 09:00:32	2.6	39.8												
25-Feb-22 09:10:32	2.9	40.5												
25-Feb-22 09:20:32	3.4	40.9												
25-Feb-22 09:30:32	3.8	41.2												



Manufacturer's Certificate of Validation

Certificate No	Date	Page
VC211100009	November 02,2021	1 of 1

tempmate GmbH certifies that the products mentioned on the following page(s) have been thoroughly tested, validated and met performance accuracy specifications over the stated ranges.

Reference Instrumentation

Model	Calibration Date	Accuracy	Serial Number	CNAS Certificate Number
XORTS-120A	June 23,2021	± 0.01°C	160408-1	J202106107608A-0001
YH-80A	May 28,2021	± 0.015°C	21031001	J202105249368A-0001
C4-180Pro	June 23,2021	± 1%RH	54260019170010	J202106107608A-0002

All reference instruments are traceable calibrated by CNAS accredited laboratories.

Environment Conditions

Air Temperature	25.5°C	Relative Humidity	53.0%RH
------------------------	--------	--------------------------	---------

Validation Information

Validation Points	Tolerance	Result	Validation Points	Tolerance	Result
+60°C	± 0.3°C	PASS	70%RH	± 3%RH	PASS
+40°C	± 0.3°C	PASS	60%RH	± 3%RH	PASS
+25°C	± 0.3°C	PASS	50%RH	± 3%RH	PASS
0°C	± 0.3°C	PASS	40%RH	± 3%RH	PASS
-5°C	± 0.3°C	PASS	30%RH	± 3%RH	PASS
-25°C	± 0.3°C	PASS	20%RH	± 3%RH	PASS

Temp Accuracy ± 0.3°C

Hum Accuracy 20~80%RH(25°C: ± 3%RH) **Others** ± 5%RH

Product Information

Product Name	Serial Number	Production Date
tempmate -M2TH	M2H211100009	11/2021

This certificate was automatically generated and is valid without signature for two years.

The calibration of the digital sensor is valid for 2 years from the date of production, considering the device is handled/stored under recommended conditions. V11/2021